

HATS

GYPSY HEADBAND



A bandana & headband hybrid! For infants, kids, youth, women & men! Yes, men, too! Keeps the sun off of the top of your head & keeps the hair out of your face. Enclosed elastic back. 100% cotton Jersey & sewn with cotton thread for perfect dyeing. Nice surface for printing too. Available in infant, child, youth & adult sizes. Try one!

Sizes:
S = infant
M = kids
L = youth, women
XL = men



#BCJ307

BASEBALL CAP

Nice 100% brushed cotton cap with cloth & dark brass adjuster in the back. Dyes well but not sewn with cotton thread. Works for men, women & preteens.

#BBC2



NEW VERSION!

Same 100% brushed cotton cap but with a velcro adjuster in the back.

#BBC3

NEW!

BRUSHED COTTON VISOR

100% soft brushed cotton twill sun visor with a nice surface in front for printing your favorite logo or saying. Has a built in sort of a sweat band most of the way around inside & a Velcro closure in the back so fits a variety of adult sizes, for men & women. Has a firm plastic insert in the brim. Not sewn with cotton thread.

#BCV



BUCKET HAT

Classic Unisex hat. Fold it up & stash it anywhere. Ready to tie-dye or dye in your favorite colors. 2 Sizes: Larger NEW Adult size & original Youth size.

NEW BIGGER SIZE!

#ABH2: LARGER ADULT SIZE

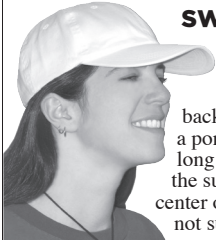
#ABH: YOUTH/SM ADULT SIZE

NEW!

SWEPT BACK HAT

Adjustable fabric strap in back & room for a ponytail. Nice long visor to keep the sun off! Seam up center of crown, so its not suited for printing messages.

#SBH



ADULT WATCH CAP



100% cotton Rib Knit & ready to dye. Lightweight caps can be used all year round. Great for teams, schools, summer camps! Dye 'em up in your school colors!

#AWCAP



COTTON PAINTER'S CAP

100% cotton. Adjuster in back makes one size really fit all very nicely. They look great dyed up with our dyes. These must be hand washed. The seams don't stand up to machine washing.

#PC



ADULT FLOPPY HAT

100% cotton Jersey sewn with cotton thread. Turn the brim up & add a brooch! Also available in infant, toddler & youth sizes on pg. 85. Cut oversized to allow for shrinkage.



#AFH



COTTON "DO"

Call it a "Head Wrap" or "Do Rag"? Wear one under your helmet when you're on your Harley. Great as a head wrap for women, restaurant folks, artists, too. 100% cotton, sewn with cotton thread, 2 tails in back to tie. Dyes vividly, easy to decorate.

#BC38



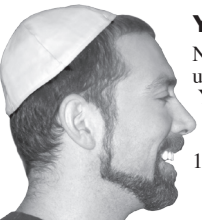
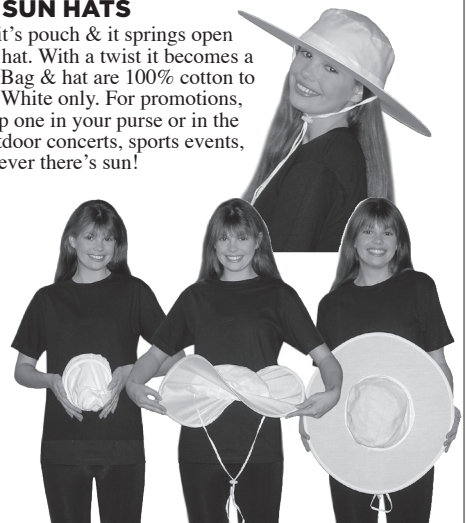
FOLDING SUN HATS

Take it out of its pouch & it springs open into a 18" sun hat. With a twist it becomes a 6" disk again. Bag & hat are 100% cotton to paint or print! White only. For promotions, vacations, keep one in your purse or in the car! Sell at outdoor concerts, sports events, beaches, wherever there's sun!

#FSH



SEE THE SILK VERSION ON PG. 76



YARMULKE

Need something to brighten up an event? Try tie-dyed Yarmulkes. We've seen them & it's a great idea. Ours are two ply (lined), 100% cotton, & ready to be dyed.

#YARM



GLOVES & SOCKS & SHOELACES

WHITE COTTON ROUND BRAIDED SHOELACES

100% cotton & 100% dyable (except for tips)! For shoes or workboots. Longer lengths are great for hoodies, costumes, & custom accessories.



#RBS27: 27" LONG:

#RBS36: 36" LONG:

#RBS45: 45" LONG:

#RBS54: 54" LONG:

#RBS63: 63" LONG:

#RBS72: 72" LONG:



FLAT SHOELACES

Tie-dyed shoelaces! 100% Cotton flat shoelaces in 6 lengths. Jazz up those sneakers!



Length 27": #SHOE27

Length 36": #SHOE36

Length 45": #SHOE45

Length 54": #SHOE54

Length 63": #SHOE63

Length 72": #SHOE72



BAMBOO BABY SOCKS



Like our bigger bamboo socks to the right. 94% pure Bamboo Rayon & 6% Spandex for stretch. Super soft! Dye up fantastic!

SIZE	AGE	Shoe Size	Cuff to heel	Heel to toe
1	NB-6m	inf 0-1	3.5"	3.25"
2	12m	inf 1-4.5	3.75"	3.75"
3	24m	kids 3-7	3.75"	4"

1=NB-6m

2=12m

3=24m

#BBSOX

COTTON SOCKS INFANTS, TODDLERS & CHILDREN

90% Mercerized Cotton, 10% Lycra (so they keep their shape). Dye them, marble them, tie dye them or paint them. They dye vividly. Throw a pair into a dyebath along with other items to make matching socks!



sizes: 4 - 5 : #KSOX4

sizes 5 1/2-6 1/2: #KSOX5

sizes 6 1/2- 7 1/2: #KSOX6

sizes 7 - 8 1/2: #KSOX7



ARM WARMERS WITH HALF THUMB

Ok, now you're talkin' elegant! 90% Cotton & 10% Spandex. Dye up very well with Fiber Reactive dyes. Paint them with our fabric paints. The black ones will discharge with bleach. Sewn with cotton thread. Pretty pearl serged edges.



WHITE OR BLACK



WHITE OR BLACK

WHITE: #BCL371

BLACK: #BCL364B



COTTON GLOVES

Heavy coarse cotton knit, off-white, stretch to fit almost anyone. Dye up great.



#GL

BAMBOO SOCKS ADULT OR KIDS

Soft, highly absorbent & bacteria resistant. Dye great with our Fiber Reactive Dyes. 94% pure Bamboo Rayon & 6% Spandex for stretch.

SOLD IN PACKS OF 3 PAIR
1-11pks 12+ 36+ 60+

#B SOCK : Adult Sizes: 9-11 or 11-13

Packs of 3: 10.50 9.33 8.40 7.64

#BKSOX4 : Kids Sizes: 4

Packs of 3: 6.77 5.99 5.42 4.93

#BKSOX5 : Kids Sizes: 5

Packs of 3: 7.20 6.40 5.76 5.24

#BKSOX6 : Kids Sizes: 6

Packs of 3: 7.55 6.71 6.04 5.50

#BKSOX7 : Kids Sizes: 7

Packs of 3: 8.40 7.47 6.72 6.11

MEN'S & WOMEN'S SOCKS

2 sizes:
Women's 9 - 11
Men's 11 - 13

90% Mercerized Cotton, 10% Lycra. Dye, tie-dye, paint, or marble them!



#SOCK

WRIST WARMERS

WHITE OR BLACK

Fingerless mitts keep your hands warm in chilly offices or while driving. Cotton/Lycra blend is soft on the skin & great for folks who find sweater type wrist warmers too scratchy or bulky. Match tie-dyed tops! For weddings, dance shows, parties, teens & schools. 90% Cotton & 10% Spandex. Dye with Fiber Reactive dyes. Paint them with our fabric paints. Black ones will discharge with bleach. Sewn with cotton thread.



WHITE: #BCL342

BLACK: #BCL363



NEW! MEMPHIS INSPECTORS GLOVES



100% cotton glove liners measure 14" in length before washing. Comfortable, lightweight, breathable, dyeable. Wear as liners under latex or plastic gloves. Sewn with cotton thread.

#MIG



BAMBOO FOOTIE SOCKS

94% Bamboo Rayon / 6% Spandex. 2 adult sizes. Come up just to the ankle. Super soft! Bamboo socks!

NEW!



SIZE 9-11
OR SIZE 11-13

#BFS

COTTON SOLID KNEE-HIGH SOCKS

NEW!

Unisex! For sports, streetwear or lounging. For historical costuming (died in an earthy color). Cotton blend (80% Cotton / 15% Nylon / 5% Elastane). Approx. length is 11.5". One size (9-11).



#RSASKL1

THIGH HIGH SOCKS

Soft cotton blend (90% Cotton / 9% Nylon / 1% Elastane) will dye almost as well as 100% cotton with our Fiber Reactive Dyes. Leg length is approx. 26".

One size only (sock size 9-11).

AMERICAN APPAREL®



#RSASKTH7



HANDBAGS

MONDO HOBO BAG

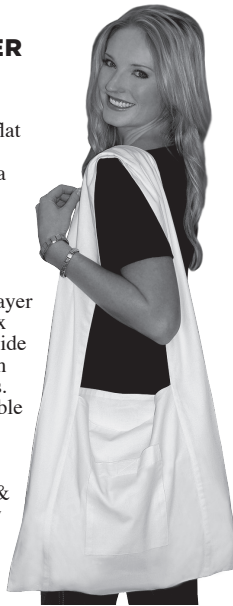
A really big Hobo Bag style for serious shoppers, the beach, moms & students. Flat woven white 100% cotton Baby Canvas. Center compartment has an ivory resin button with a tab at the top. Rounded bottom corners. Turned & stitched edges. Attached shoulder strap is 1.75" wide x 15.5" long.



#BC290

COTTON SHOULDER BAG

Well-made & functional in flat woven 100% Cotton Garuda & sewn with cotton thread. Measures 17" across & 15" tall with a 3" wide double layer strap. Has 6" x 7" pockets inside & outside with vecro closures. Bag is reversible - can be worn inside out! A great surface for stamping & painting. Easy to tie dye.



#CSBAG

BOHO HOBO BAG

Our original Hobo. Flat woven white 100% cotton Baby Canvas. Center compartment has a tie at the top. Rounded bottom corners. Turned & stitched edges. Wide shoulder strap. Carry everything you need for your busy life: yoga stuff, workout stuff, books, crafts, travel, events, even a trip to the market!

height: 17"
width: 16"
straps: 20"
gusset: 5"



#BC272

NEW! CROSS BODY BAG

100% woven cotton Baby Canvas bag has 1" wide resin button with loop closure. 2 outer pockets: 4" wide x 6.5". Bag overall approx. 8" x 10" x 48" long strap. Wear it in your booth. Dye, tie-dye, stencil, stamp, paint or screen it. Dye it to match to any of your garments. Sewn with cotton thread.



#BC386

ROPE HANDLED TOTE BAG

Roomy tote bag! Flat woven white 100% cotton Baby Canvas. Rope handles are covered with self fabric. Handles run thru a casing, so you can cinch it up. 6" bottom gusset. Turned & stitched edges. Bag body is 23" w by 18" h.



#BC295

MESSENGER STYLE BAG

11" wide x 12" high, 3.75" gusset, strap is adjustable from 27" to 54". Natural colored PFD 100% cotton Canvas & sewn with cotton thread. Strap is strong cotton webbing with reinforced stitching. Roomy inside pouch with cloth separation divider. Big flap, just begging for decoration!



#MSBA

CONGRESS BAG

Nice messenger style bag with a large front flap begging for a screened or painted surface design! Pocket for cell phone, 3 pen pockets, pockets for business cards or credit cards, roomy main section for laptop or several large books. Strong durable 100% cotton canvas & sewn with cotton thread. All canvas products should be washed delicately & line dried to avoid fraying & shrinkage. Front Flap 13" x 10.5" Length 12" Width 10" Pocket Depth 7" Gusset 3.75" Strap 28" to 55"



#CONGB

BAG IN A BAG TRAVEL BAG



Starts as a 5.75" diameter disc pouch, unzips into a small lightweight travel or grocery tote! Small enough to fit into your regular purse. 100% bleached cotton Garuda. Reinforced at bottom with a layer of clear vinyl that's sandwiched in between 2 layers of cotton - so it holds up in washing & won't shred. Double stitched straps. Nylon zipper.

Zipper at bottom!
15" wide
13 1/2" tall
5 3/4" deep
Straps: 21" long



#BC100

LITTLE LINED SHOULDER BAG

Lined shoulder bag of white woven cotton has a zippered closure with a dyeable rope for the handle. 7.5" tall X 5.5" wide. Zipper part doesn't dye, but all the thread does! Great for girls, or cell phones, your wallet, whatever.



#BC108

CANVAS BAGS FOR DYEING/PAINTING

3 TOTE BAGS

Natural off-white, ready to hand dye, paint, screen or marble.

Shoulder Sling

14" x 18" x 4" approx.
11" x 11" pocket
30" strap

Carry All

Great for groceries.
15" x 17" x 5"
20" strap

Town Tote

13" x 13" x 5"
20" strap



10 OZ. COTTON CANVAS



Shoulder S.
Carry All
Town Tote

#SSB
#CAB
#TTB

GORILLA MARKET BAG



Big & strong & makes a great reusable shopping bag. Holds as many groceries as large store shopping bags. Reinforced straps go all the way to the bottom of the bag.

100% natural colored cotton canvas & sewn with cotton thread.

Before Washing:
height: 18"
length: 14 1/2"
width: 7 1/2"
straps: 21 3/4" x 1 1/4"



#GMB

COOL TOTES

Made in the USA in 7 oz. cotton duck sewn with cotton thread for perfect dyeing. Each has a gusset & 2 pockets on one side.



14" wide x 9" / 3" gusset w/ 13" strap #CTOT14

18" wide x 16" / 5" gusset w/ 20" strap #CTOT18

CINCH TOP BACKPACK



Strong like bull! Made with super strong 10 oz. 100% cotton Canvas.

Straps are heavy 100% cotton web tape. All internal seams are reinforced with heavy cotton twill tape. Sewn with heavy cotton thread. Nylon zipper, which closes the huge pocket built into the front of the pack, will

not dye. After shrinkage, this bag will measure approx. 16" tall x 14" wide.



#CTBP

LOW COST PROMOTIONAL TOTES



FOR EVENTS SCREEN PRINTING GIVE-AWAYS AT SHOWS

Lighter weight 100% cotton Duck fabric. Excellent dyeability! 3 sizes. Largest size only has a gusset. Simple & inexpensive!



11"W x 12"H no gusset
13"W x 13"H no gusset
14.5"x18" with 5" gusset

11" x 12" : #CPT11
13" x 13" : #CPT14
14.5" x 18" : #CPT18

LUNCH BAG



Made of a lighter fabric weight canvas. Top rolls up & closes with a velcro tab. Lunch is just one of the uses. Measures about 6" x 9" when rolled with a 5" gusset.



#LB

DRAWSTRING BAGS



Lightweight 100% cotton with cotton drawstrings Sewn with cotton thread! Perfect for printing, stamping, painting & dyeing. Nice as a resale bag for your tee's. Slap your logo on the top & you have an instant custom "boutique" bag. Great for promotions, camp & group projects, too!

#DSB: 3 Sizes

8x8
12x12
16x16

DRAWSTRING BACKPACK



Simple quickie backpack with drawstrings that cinch close at the top & double as shoulder straps. Great for camp projects, retail bags, stamping or screening on a logo. Nice as a promo item.

#DSBP: One size

REAL BIG BAG



This is the mother of all bags! Big! Strong! Everything you want in a bag. 10" wide, 18" long, 12" high with a 36" long, 3" wide double layer strap. Rivets at stress points. This bag was originally designed for newspaper delivery. Ratio of bag is longer than most bags. Handy for carrying newspapers, magazines, rolled long cardboard tubes, bigger legal sized pads, art pads, brushes & art supplies. Made in the USA.

#RBB



JEWELRY POUCH

Flat woven 100% cotton for keeping your jewelry or other trinkets in. Double layer of fabric with a little drawstring.



#BC129



BAGS & APRONS

JUTE BEACH BAGS



Natural tan Jute bag with cotton lining in two sizes make perfect summertime beach bags! Great for painting & stamping on. These dyeable jute bags come at a sweet economical price for their size.

#JBB - SZ 14 OR SZ 19

20"x14"x6"
24"x19"x6"

BIG SOFT BEACH BAG / TOTE

Simple design. Soft & easy for tie-dyers to fold up their designs. Roomy Bali 100% cotton Baby Canvas bag. Rectangular shape 20" wide x 16" high. Big front pocket is 7"x9". Bottom gusset is 9" x 14". Self fabric handles are 23" long.



#BC350

COTTON DUCK PAPER GROCERY BAG TOTE

NEW!

Say NO to plastic! This tote bag is designed to mimic the size & shape of a paper grocery bag. For those of you who want to stop using plastic & paper bags, this is a great alternative. Made of a sturdy 10 oz. cotton duck canvas with taped inner seams. Dye it, stamp it, personalize it & do your part for our Mother Earth. 17" x 12" x 7"



#ND101

COTTON DUCK SHOULDER BAG

NEW!

Lined with muslin & has 2 pockets & a zippered pocket inside. Ties at the top help keep it closed. Strap is long enough to wear crossbody, though not so long that one-shoulder wear isn't an option. Made from 10 oz. cotton duck. Sewn with polyester thread. Approx. 16" x 13" with 19" strap.

#ND7177



MEDIUM LINED SHOULDER BAG

NEW!

Cute little shoulder bag with a lined interior with a pair of internal pockets. Perfect little shoulder purse that's easy & just the right size. Made from 10 oz. cotton duck & lined with cotton muslin. Sewn with polyester thread for strength. Approx. 12" x 10" with 16" handles.

#NDS10



COTTON DUCK TOTE BAG WITH ZIPPER CLOSURE

NEW!

This tote bag has one side pocket, between the straps & has a zipper closure across the top. Makes a great medium sized one-shoulder purse or a little beach bag. Innumerable uses! Made from sturdy 10 oz. cotton duck & sewn with polyester thread for strength. 13" x 10" x 6"

#ND808



COTTON CANVAS APRONS IN 5 SIZES

100% Natural colored 6.5 oz. Cotton Duck. Sewn with cotton thread. Have 3 large pockets across just below the waist. Very sturdy & well sewn, should last a long time. Not preshrunk. Shrinks up to 15% at hottest settings in machine washers & dryers.



CAFE APRON #APC



#AP1



#AP3

MEASUREMENTS ARE WITHOUT THE NECK STRAPS & THE SIDE TIES.

#AP1: El Grande (Men's): 29" wide by 33" high

#AP2: Adult Apron (Women's): 25" wide by 29" high.

#AP3: Big Kid Apron: 20" wide by 24" high

#AP4: Little Kid Apron: 16" wide by 20" high

#APC: Cafe Apron: 24" wide by 14" high

WHITE TWILL APRONS IN 5 SIZES

#WCTA

#WCTAC

Great for screen printing, transfers, stencilling, stamping & painting. Made from lighter weight, yet strong, more finely woven 100% WHITE cotton Twill. Sewn with cotton thread. Lighter than cotton duck, so it's easier to make more varied tie designs for tie dye. Easier for wax to penetrate for batik designs. Durable in the wash. True white of twill fabric will give you clean clear whites in tie-dye & batik. All sizes have 4 large pockets just below the waist.



#WCTA:

- 1 Grande
- 2 Adult
- 3 Big Kid
- 4 Little Kid

#WCTAC:
Cafe Apron

COTTON DUCK TOTE BAG WITH SIDE POCKET

NEW!

Great tote bag is simple & useful. Has a nice little side pocket between the straps that's just right for a small bottle of water, cell phone or your keys. Made from 10 oz. cotton duck & sewn with polyester thread for strength.



#ND809



LINEN WINE BAG NEW!

Dye, paint, embellish, stamp or screenprint them! Seen in expensive retail stores with simple vintage stencil designs. Use as individual shoe bags for traveling & storage. Use them for your Renaissance Faire costume - as a bag hanging from your belt? Linen & wool were the dominant fibers used in Europe in the 1500's - so these bags would work well as part of a Faire costume or to tuck into your carrying basket to discreetly hide your personal items (like the cell phone you're not supposed to bring to the Faire). 100% Linen bag with a Jute cinch cord closure. 6" x 14" bag. Sewn with polyester thread.



#LNWB

JUTE WINE BAG NEW!

Echoes the rustic feel of California vineyards. Give it that creative punch with dye, paint or embellishments. Personalize with markers, stencil a design. This bag dyes well & comes with a dyeable rope handle. There is a plastic lining inside that gives it an extra little padding & gives the bag a little protection against any accidental leakage. The Jute Wine Bag is sewn with poly thread & the rope handle is a cotton/rope blend. 4" wide x 4" depth x 14" height.



#JWB

YOGA BAG

100% cotton muslin Yoga Bag! Sewn with cotton thread for flawless dyeing. Drawstring closure at the top, large pocket on the side for your ID, keys, or class fees. Dye it up, stamp Sanskrit characters on it, or screen print. Be the envy of the class with your custom yoga bag. Bag has an 18" circumference & is 28" long. 36" long shoulder strap. 7" x 8" outer pocket.

#BC298



DOGGIE BOUTIQUE

DOGGIE T-SHIRTS

100% Cotton Jersey dog tees have raglan style diagonal inset sleeves. Creates a gradual slope across the shoulder muscles of dogs, giving a better fit than a human tee. Rib knit taped neckline & armhole hems. Backpiece of t-shirt is sized larger than front (or chest) piece of tee so that your design will read better across dog's back. Bottom hem has a soft 2" rib knit edging & the hem is straight (not curved).



	Length*	Weight
XS:	7"-10"	2-8
S:	10"-13"	8-14
M:	13"-17"	14-24
L:	17"-23"	24-45
XL:	23"-29"	45-75
2XL:	29"-35"	75-100

* Measure from base of neck to base of tail. Allow for garment shrinkage.



XS, S, M: #DOGS
L, XL, 2XL: #DOGL

FARMER'S MARKET MESH SACK

Great way to carry around your purchased goods. More stores are including a bag tax, so it's economical to bring your own bags. Better for the environment! Our 100% cotton bag dyes beautifully! Carry your hobby supplies, vegetables or fruit, gym gear, beach wear, books, toiletry supplies & many more creative uses. Sewn with a 50/50 poly blend thread.

#FMMS



FARMER'S MARKET MESH SACK WITH SHOULDER STRAP

Our Farmers Market Mesh Sack now comes with shoulder straps!

#FMWS

DHARMA'S PRODUCE BAGS NYLON MESH: PACKS OF 6

Nylon mesh produce bags are strong, REUSABLE, stretchy & better than plastic bags for the environment. Lightweight so they won't increase the price of your veggies. Available in 2 sizes & sold in packages of 6. Come with a SILK drawstring to cinch the top closed. Bag & drawstring dye great with Acid Dyes. Or use them undyed. Make nice gift bags. Use these to keep fringed scarves from tangling during the wash out process. Protect your finer lingerie & smaller delicates when laundering.

SEE THEM DYED IN COLORS ON OUR WEBSITE!



#PROBAG
10" x 12"

12" x 15"



DOGGIE HOODIE WITH POCKET

Kangaroo pocket on the back. 100% soft 5.0 oz combed ringspun baby rib cotton knit. Double needle rib binding on the sleeves & bottom. Sewn with cotton thread. These run small: See our website for more info.

Doggie sizes: XS, S, M, L
#3933-WHIT



DOGGIE BANDANAS

22" X 22" X 29"
TRIANGLE COTTON BANDANAS

Bandanas are bleached, hemmed with cotton thread on 3 sides. Sewn with cotton thread.

#TBSET



HOME DECOR

100% COTTON HEMMED NAPKINS, PLACEMATS, TABLE RUNNERS



NEW!

Midweight 8oz. 100% Bleached Cotton Canvas. Single layered & hemmed. Look like high-end table linens! Great for kid's crafts projects. Handle with care when dyeing & washing. Dimensions before shrinkage:

Napkins: 15" x 15" (sets of 4)
Placemats: 12" x 18" (each)
Runner: 13" x 54" (each)



#HNAP
#HPMAT
#HRUN

COTTON SHEETING THROW PILLOW COVERS

Bleached. Sewn with cotton thread. Zipper closure. For dyeing or paint. Pillow insert not included.

In 3 sizes:

14" x 14", 18" x 18", 24" x 24"



#CTPC14
#CTPC18
#CTPC24

SILK HABOTAI PILLOW COVERS

4 SIZES

14" x 14" 16" x 16"
18" x 18" 24" x 24"

OPEN OR CLOSED SEAMS

Add a "C" for closed or an "O" for open to the end of the stock number below.

For tie-dye, order closed seams. For silk painting, order open side seams for easy stretching & painting. In either case, the zipper is already sewn in place. 100% 10mm Habotai silk. Sewn with silk thread. Purchase pillow inserts at fabric stores.



14" : **#STPC14**
16" : **#STPC16**
18" : **#STPC18**
24" : **#STPC24**

TABLE RUNNERS, PLACEMATS, NAPKINS



Made in 7 oz. 100% cotton bleached Duck. Runner is hemmed. Placemat & napkins are serged.

#NAP: Napkins 15"x15" (sets of 4)
#PMAT: Placemat 12"x18" (sets of 4)
#RUN: Runner 14"x 54" (each)

COTTON PILLOWCASES

Most pillowcases aren't 100% cotton & won't dye well. Surface finishes will prevent dyeing. Finishes can't easily be removed. Even after many washings, they dye splotchy. Our cases are 100% cotton without finishes! Hemmed with cotton thread. 60x60 thread count. **Size: 22" x 32"**



#BPC



HANDWOVEN PLACEMATS FROM RECYCLED NEWSPAPER



Handwoven using recycled paper from magazines & newspapers. Beautiful random patterns. Overdye with pastel cotton dyes. Handpaint, stamp & print them. Make a cool background for mounting artwork or photos. Washable if you do it carefully. (Check website for examples & instructions.)

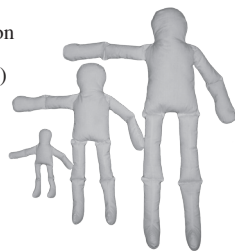
14" x 18"



#RPP

NATURAL MUSLIN PRE-STUFFED DOLL

Make your own dolls! Doll forms are covered in natural cotton muslin fabric. Perfect for fabric markers & paints. Give them a face, add some yarn or roving for hair, give them (tie-dyed!) clothes Great for class or camp projects!



#DOLL 5"
#DOLL 7"
#DOLL 12"
#DOLL 18"
#DOLL 27"
#WDOLL 14"

Size heights:
5", 7", 12", 14"

(#WDOLL : Same muslin stuffed doll with inside wires & bead eyes (not pictured).)

SILK GIFT BAGS

Silk Habotai or silk Organza (sheer). Takes the place of boxes if you've got something to sell or gift to someone. The 15" works perfectly for wine bottles. Also nice for storage of jewelry. Each size bag is sold individually.



HABOTAI ORGANZA

2"x 3"	#SGBAG3	#OBAG3
3"x 4"	#SGBAG4	#OBAG4
4.5"x 6"	#SGBAG6	#OBAG6
5"x 7"	#SGBAG7	#OBAG7
6.5"x 11"	#SGBAG11	#OBAG11
6.5"x 15"	#SGBAG15	#OBAG15

SILK:
8MM HABOTAI OR
5MM ORGANZA

SILK BED PILLOWCASES

Made from the best 16.5mm silk Charmeuse, patterned on a standard pillow case & sewn with silk thread. 21" x 32" including a 3.5" hem.

#CBPC



LAUNDRY BAGS

100% cotton Duck. 20" x 34" with a drawstring. You know you need a tie-dyed laundry bag & have needed it for some time, but it's only now as you read this that awareness floods your mind.

#LBAG



WALL HANGINGS & MASKS

NYLON FLAGS

NEW SIZES!

Nylon flags with a sleeve along one short side for rope or pole hanging. Can be dyed with our acid dyes, painted, written on, marked on. Herald your event!

- 10" x 15" #NMF
NEW 2' x 3' #LNF
NEW 3' x 5'
NEW 4' x 6'

BANNERS

100% bleached 7oz. cotton Duck. Hemmed all around. Come with a wooden dowel & end balls which can be slipped off while you're working on them. Useful for booth signage or to herald an event. Paint, stencil, stamp. Great for camp projects.



- 8"x14": #BAN8
 13"x20": #BAN13
 18"x28": #BAN18
 24"x36": #BAN24
 28"x48": #BAN48



TABLECLOTHS OR HANGINGS

3 Sizes:

7 oz. Cotton Duck
 Serge stitch edges.



- 52"x52": #TC52
 60"x72": #TC72
 60"x102": #TC102

TERRY VELOUR BEACH TOWEL BLANKS

100% cotton Terry Velour, sewn with cotton thread, sheared (low nap) so they're better for dyeing. Lush, plush tie dye towels -aahh! You'll never lose your tie-dye towels on the beach or campsite.

#TVBT: 30" x 60".



#TVBS: Bath Sheet: 35" X 66"

NEW SIZE!

NEW MASKS FOR THEATER OR COSTUMING!



JOKER #15

EL MEDICO #16

#PMASK #15 & 16:

Rigid paper mache with elastic strap. Use foil glue & colored foils to add texture & color. Trim with lace or custom dyed silk or rayon ribbons.
 "Joker" mask (#15): 7" wide x 9.5" long x 4.5" deep.
 "El Medico" mask (#16): 6" wide x 6" long x 5" deep.



#1 MASKS



#2



#3



#4



#6



#9



#11



#12

DECORATE WITH FOIL, MARKERS, PAINTS, RHINESTONES, GLITTER, LACE & RIBBON!

#1, #2, #3 and #4 are flexible thin plastic, covered in fabric.
 #9, #11, #12 are paper mache molded masks.

- #MASK #1, #2, #6, #7:
 #MASK #3
 #MASK #4:
 #PMASK #9:
 #PMASK #11:
 #PMASK #12:

SHOWER CURTAIN

Your bathroom needs tie-dye! Lighter weight 100% white Bali cotton Garuda. 2" top edge hem overlap with 12 button holes for shower hooks (not included). 3 sides have narrow turned hem. 76" x 76" (will shrink down to about 72" square). Can also be used as a wall hanging, room divider, or as curtains for home or your booth! Sewn with cotton thread.



#BC320



GOOD LUCK BANNERS



Inspired by the celebration banners in Bali. 17 feet long & 28 inches wide at the bottom. 100% flat woven cotton sewn with cotton thread. Vertical slot 12 feet high & a 5 foot hanging part ending in a star. Slot will take a bamboo, wood, or plastic pipe up to 1 inch diameter. Dye them, tie-dye them, print or paint them. Use to attract attention to a booth, real estate open houses, lining housing driveways for events. Trumpet a wedding or an entranceway.

Tall:

(about 12 ft + 5 ft tail)

POLES NOT INCLUDED.

COTTON #GLB

NYLON #GLBN



TALL OR SHORT

The banners have been so popular we've responded to your requests by adding some in dyeable/printable Nylon & in Silk. Also, since some people have ceilings, we've added a shorter version.

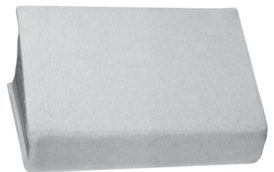
Short banner: (about 6 ft + 2.5 ft tail)

- Cotton: #GLBS
 Nylon: #GLBNS
 Silk: #GLBHS

TEXTBOOK COVERS

GREAT FOR FUNDRAISERS & CRAFT FAIRS SALES.

See your textbooks from a mile away! Never again will textbooks need to be dull & impersonal. Cotton/Lycra™ fabric covers can be tie-dyed, marbled, painted, or stamped! Stretches to fit books from 7.5" x 9" to 10.5" x 13". Covers can be washed & used over & over. Sewn with nylon thread.



#TBC

